



Overview of POC. A WOLFSIN product...

POC is classed as Push to talk over cellular. What this means is the radio operates on a management platform and instead of transmitting voice over the airwaves it turns voice into packets of small data, which in turn sends the data packets over the cellular network.

As these packets of data are very small they are able to operate on the B28/700Mhz/ LTE network which provides greater coverage than the normal network a cell phone operates on.

The POC radio typically only uses 300mb per month (based on 12 hours per day usage) The radios carry a SIM card much like a cell phone but they operate like a two way radio. This means you can talk to 1 person or 100 people all at once without the need of dialling the person you want to talk too.

As the POC radios operate on a platform there is a small on going cost per month per radio, a lot like the cost of a repeater but cheaper. The pricing of this is detailed in the Price section.

In essence POC radios and systems are much like analogue or digital radios operating on repeaters, **except they have more range/ coverage, are clearer, cheaper to run and have a lot more functionality.**

Required coverage area.

The POC radio system operates as long as the radio is in 3G and 4G cellular coverage. If the radio goes outside the cellular coverage area then the radio will not be able to transmit or receive. However when the radio comes back into cellular coverage it will automatically re-enrol and be able to transmit and receive. This typically takes 9-11min.

The POC radios operate on the Spark M2M system, this is designed for low data use devices and as a result of this has a greater coverage area than regular cellular coverage.

Added to that our POC Handheld radios have a small stubby aerial which offer better gain and performance over a cell phone.

Our Mobile unit has as standard glass mount antenna for better coverage, or as an optional extra we can supply a front (ball bar) mounted Standalone aerial which offers 6.5dB gain giving exceptional coverage.

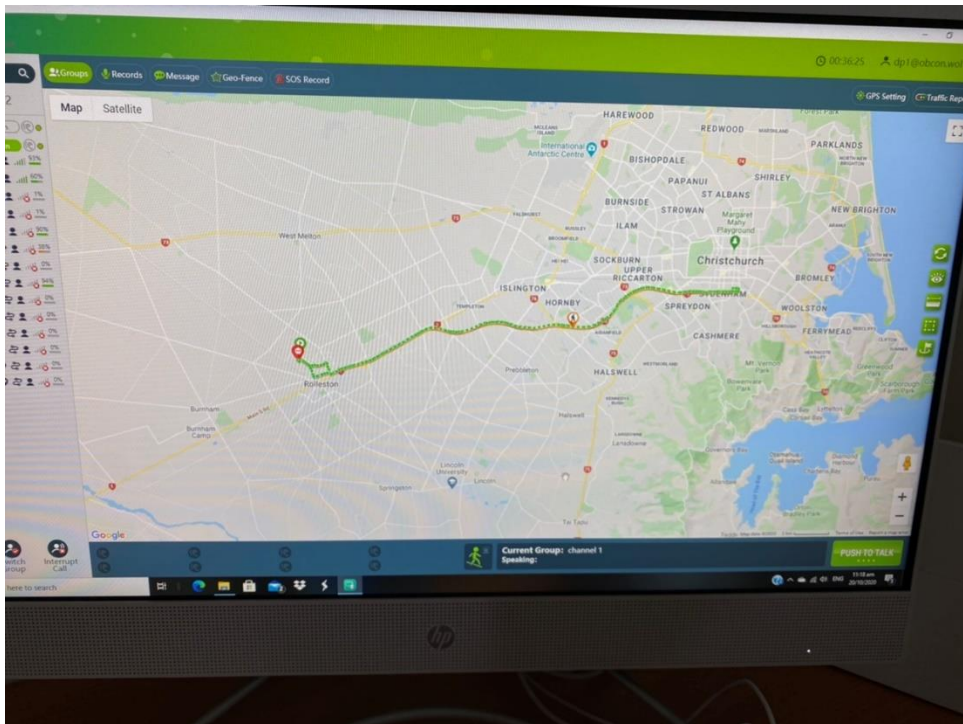
What this means is you have communication anywhere in the country. You can talk local, one side of the city to another, or city to city. Eg: Christchurch to Auckland.

Our POC radios are also able to operate on the Vodafone or Spark network if the customer so chooses.

DISPATCH MANAGER

All POC radios operate on a platform, this is what controls the features of the radios, a-bit like your computer. It needs a platform to run all the programs etc. A part of this platform is the Dispatch Manager, this is a program that sits on a computer.

You can choose to have the dispatch manager running in say your operations room, or we can run it remotely for you.



Dispatch Manager screen

The Dispatch Manager has the following functions:

- Tracking
- Ability to communicate with any of the users
- Able to monitor all groups (channels)
- Can send out a group call or private call
- Ability to name each radio to an individual
- Records all transmissions if required for audit
- Displays SOS calls, for quick response.
- Tracking info displayed is GPS co-ordinates, speed, time etc.



HEALTH AND SAFETY

The POC system/ platform provides a high level of Health and Safety as radios can be tracked in real time or if required tracking information can be displayed on a date by date basis. The POC system also has SOS functionality, which means when a worker is requiring immediate assistance your operations people are notified immediately.

How the SOS function works.

- Worker requires assistance so pushes and holds side button on radio
- An audio SOS call is put out on all radios in the group alerting them to an incident
- The screen below shows what comes up on the dispatch managers computer screen SOS on Dispatch manager screen
- The dispatch manager shows the SOS with location information
- The dispatch manager can talk directly from the computer to the end user radio to gather more information
- The dispatch manager can cancel the SOS call. This then sends a message to all other users that the SOS has been resolved.

With the management platform running you have a lot more control over not only health and safety, but if a worker goes off site they not only have communications back to the office, but they can be tracked showing their location at all times.

Another example is say if your expecting a truck into the yard, if they have the POC radio on board you can quickly and easily check their location and speed and know how far away they are, if you need to pass information to the truck you can just call them on the radio.

RECAP

The POC radios and system is the way of the future, not only in terms of more coverage areas as new cellular towers come on line, and from a Health and Safety point with tracking, live updates, ability to recall messages etc.

But the ability to customize your radios and systems to your needs. This has never been able to be achieved before with two way radios, but now you can. An example of this is the ability to rename your radios. So you can personalize a radio and call it your workers name. You also have the ability to customize the radio channels name, eg: you can call a channel "warehouse" channel, another channel could be called "yard"

In fact you can have as many channels as you want, also you can decide who goes onto what channel, so you can breakdown the factory if one part of the factory doesn't need to talk to another. And only the managers can have all the channels.

This can be done at set up or if you decide to change the way you operate down the track you don't need to return all the radios to get re-programmed saving cost and time.