

WOLFSIN **GRIZZLY**

Born Tough to Work Hard

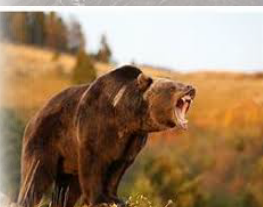
UHF 400-470 MHZ, IP67, MIL SPEC ANALOGUE PROFESSIONAL HAND PORTABLE

The Wolfsin Grizzly! A Big name for a big, tough, ultra long lasting analogue PMR radio. Named after the Grizzly because it is one big bear of a radio. The formidable Grizzly is known for its strength, durability, toughness and determination, likewise the Wolfsin Grizzly PMR radio really will go further, work for longer and take everything the outdoors or indoors can throw at it.

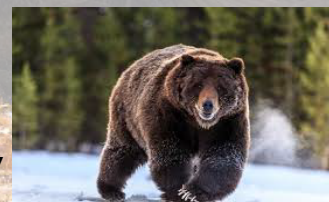
Grizzly tough, the Wolfsin Grizzly is designed with a normal thickness cabinet built into a second cabinet which we have tested exhaustively in the Cairngorm mountain to minus -15°C for days.

Grizzly operational duty cycle endurance, with a massive battery capacity of 3200 or 3500 Mah (average/minimum) the Grizzly can keep making that call for days and days and sometimes weeks without a recharge. In our tests we managed a thirty nine hour (39) duty cycle at full power, with no battery save option used, in generally freezing weather on a 5/5/90 or greater duty cycle. **In over 50 years of PMR radio experience this is probably the best battery to high RF performance we've witnessed of any radio - ever!**

Grizzly water proof to IP67 and probably a bit more, we gave up counting after 35 minutes at 1 metre depth.



Grizzly loud, you will hear the **Grizzly** roar and just like their distant cousin, the wolf, this radio can howl at 1000 mW of maximum safe driven audio. You will be heard in the forest or on the mountain in a gale or driven rain. Equally you will be heard in the factory, the construction site or a civil engineering project.



The **Grizzly** has all the features and functions it needs to survive and work extremely well in the environment it was designed for. We said it was big and it is at 128 mm high, 65 mm wide (at its widest) and 44 mm deep and weighs in at around 300 grams. Actually it is roughly the same size as the latest top of the range digital radios - yet can cost around the same as some of those radios batteries!

The **Grizzly** features and functions include, 16 channels, Huge 3200 Mah Lithium Ion battery capacity as standard, 1000 mW of audio, Multi pin audio connector with screw fixing for added connected security, CTCSS and DCS privacy codes (including special programmable codes) Scrambler (10 codes), Compander audio, Scan, Programmable busy channel lock out, Programmable time out timer with penalty, audible Low battery warning, local emergency alarm (siren) which for safety will run until radio is switched off.



Wolfsin agent stamp/card

TACTICOM RADIO SYSTEMS
272 BATH STREET,
GLASGOW
G2 4JR